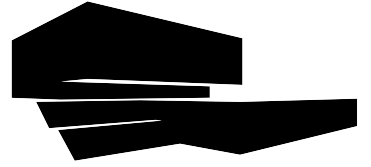


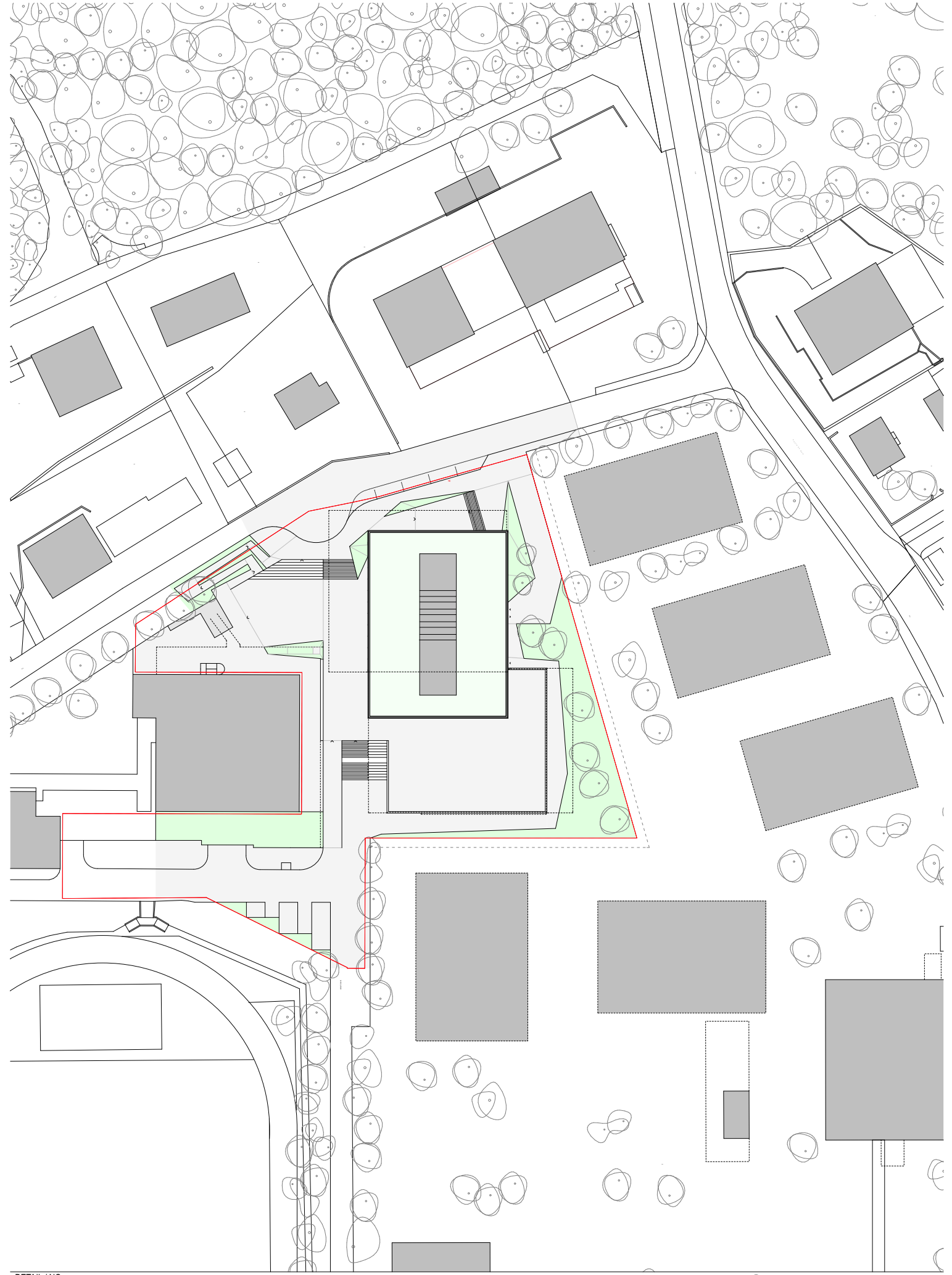
# COLLEGE CROSET-PARC

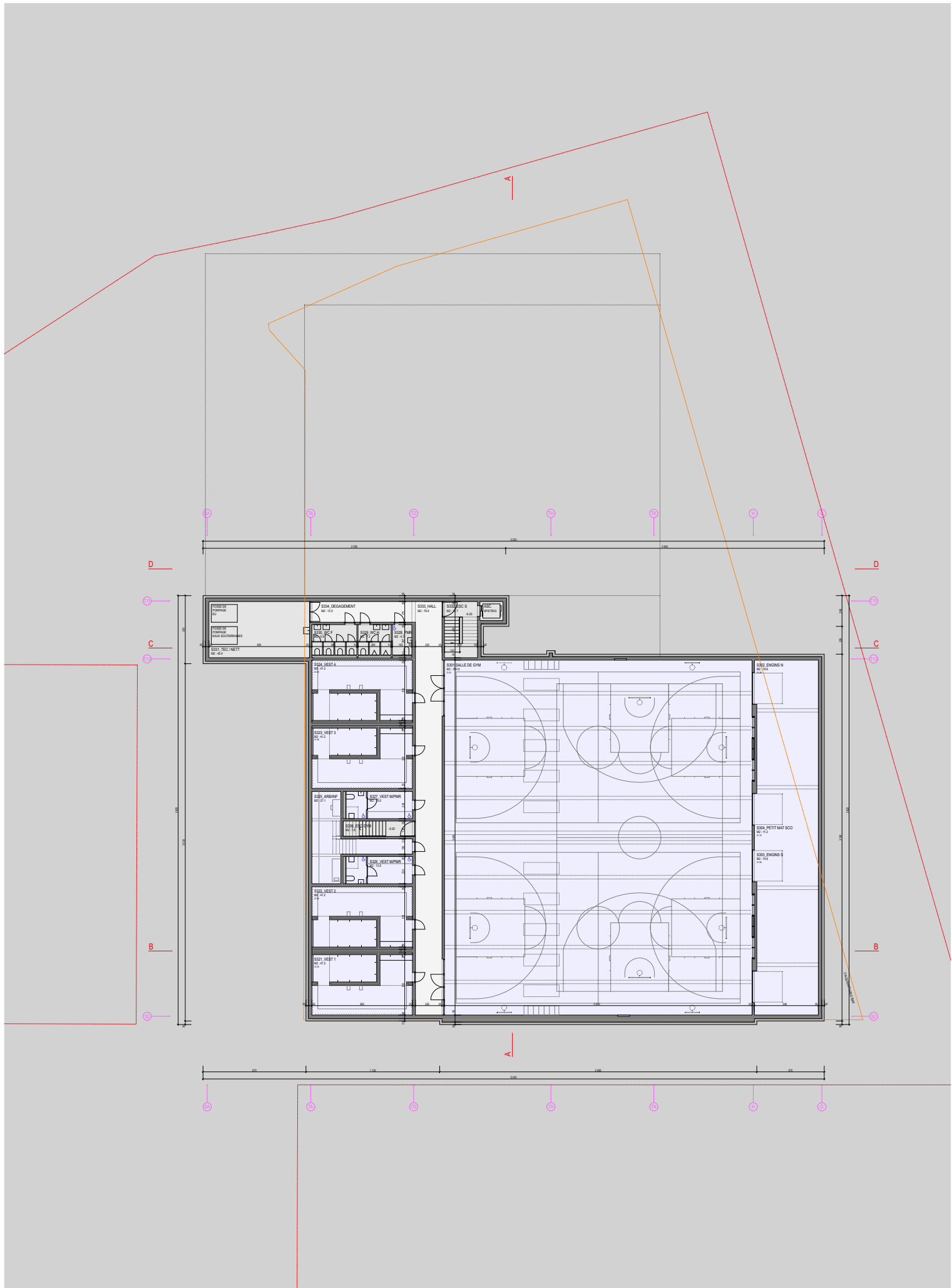
ECE\_COMMUNE D'ECUBLENS

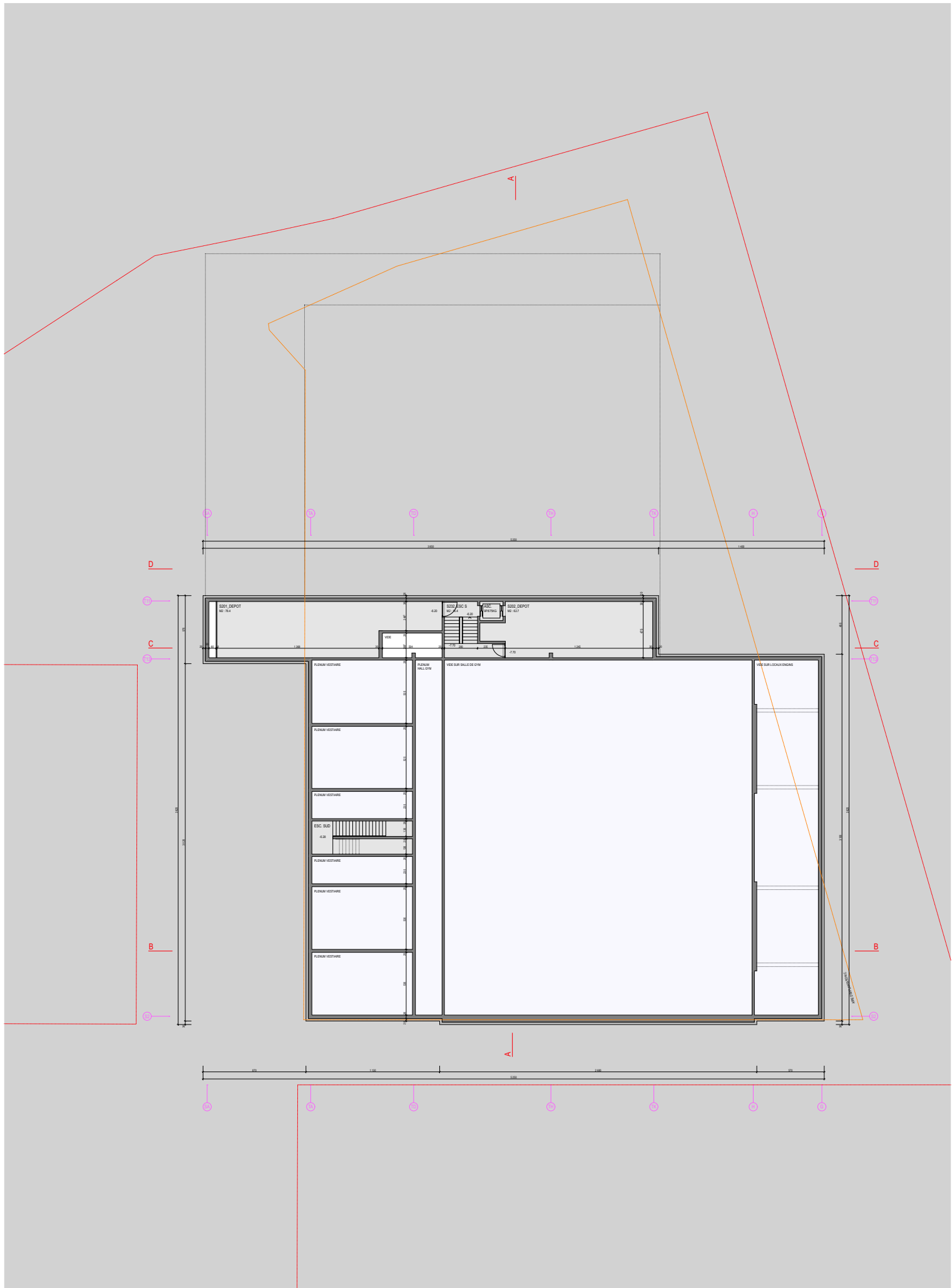


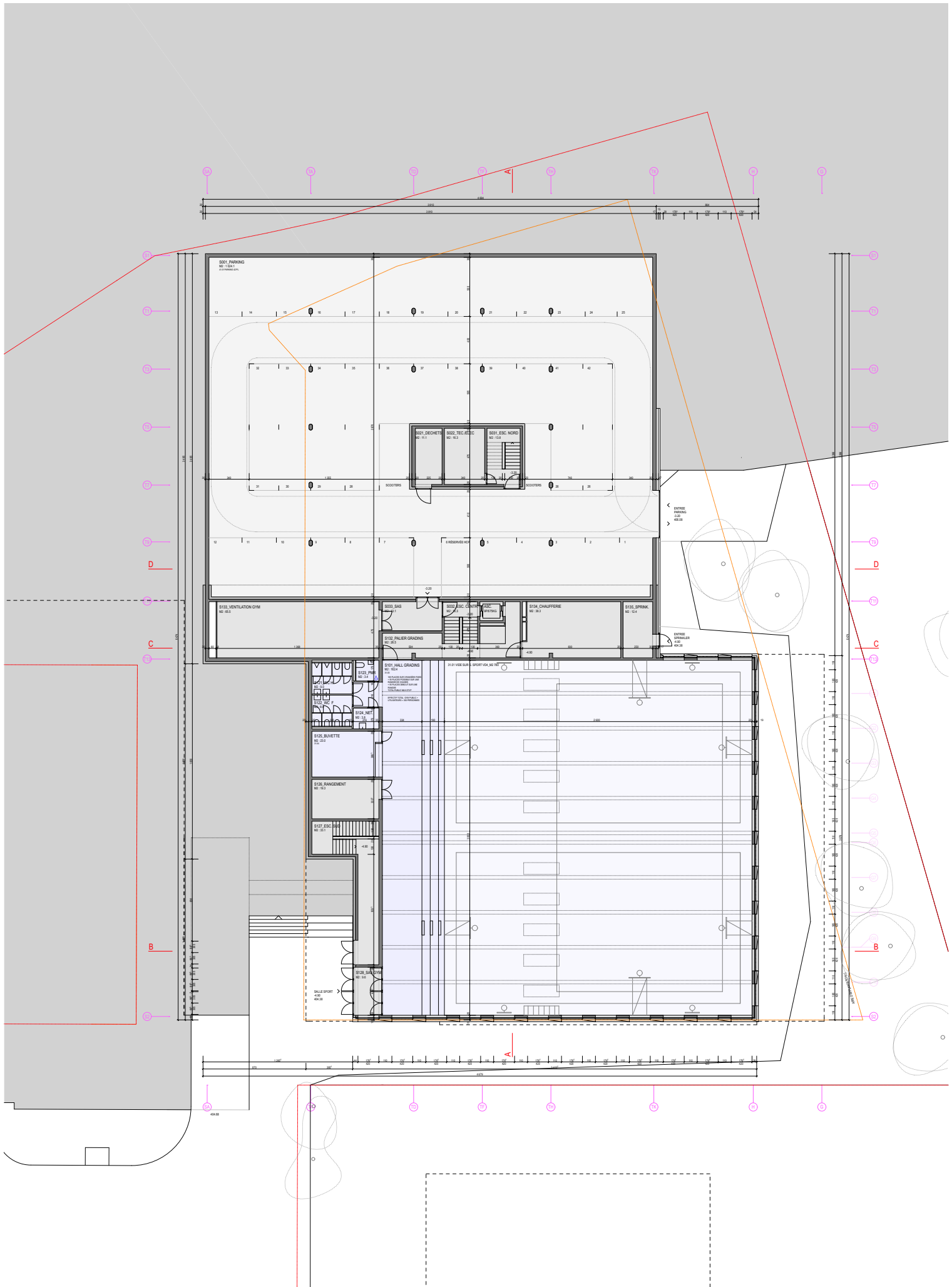
**réductions plans, coupes, façades 1/400**  
base 16.11.16\_enquête publique

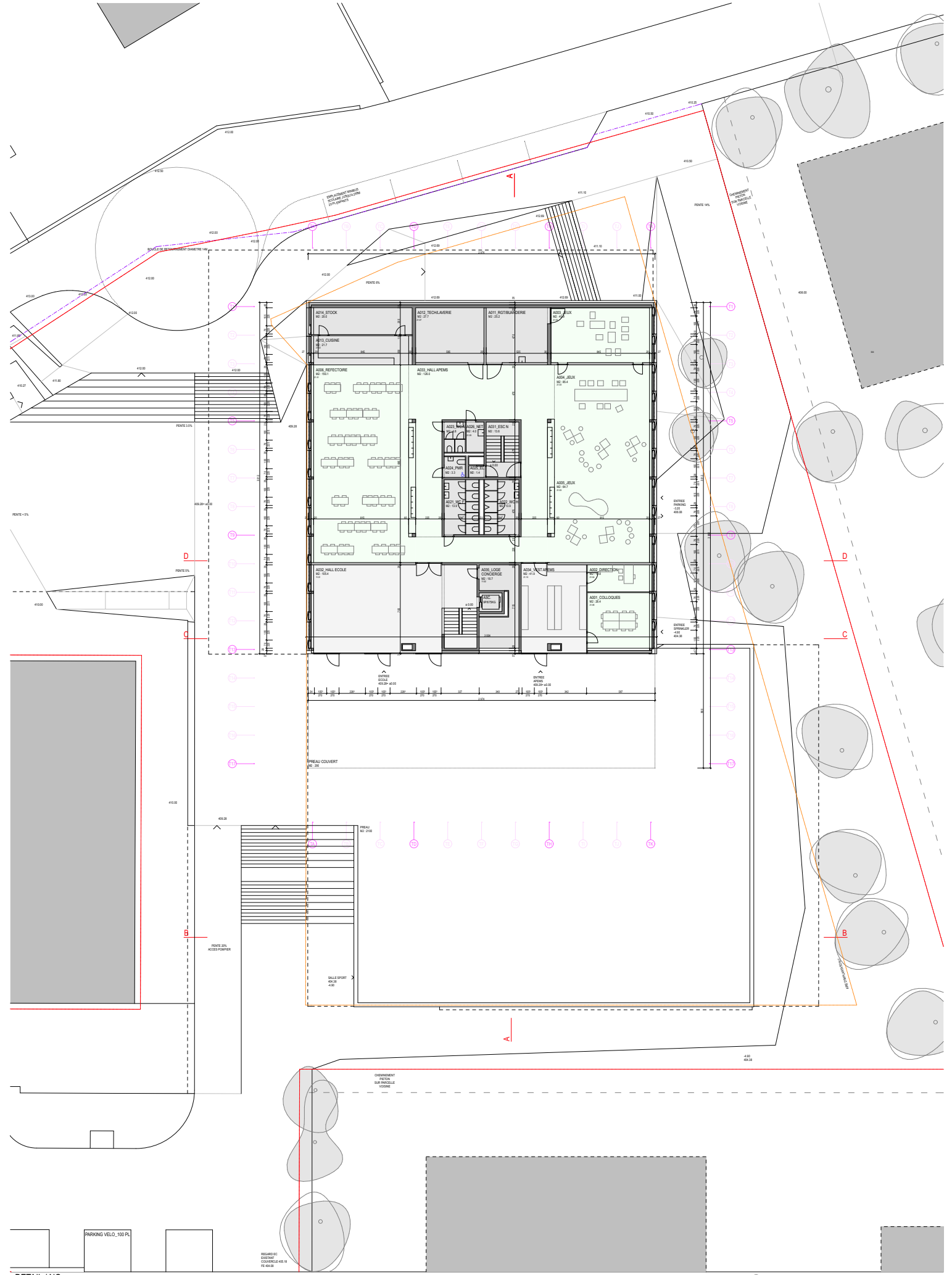


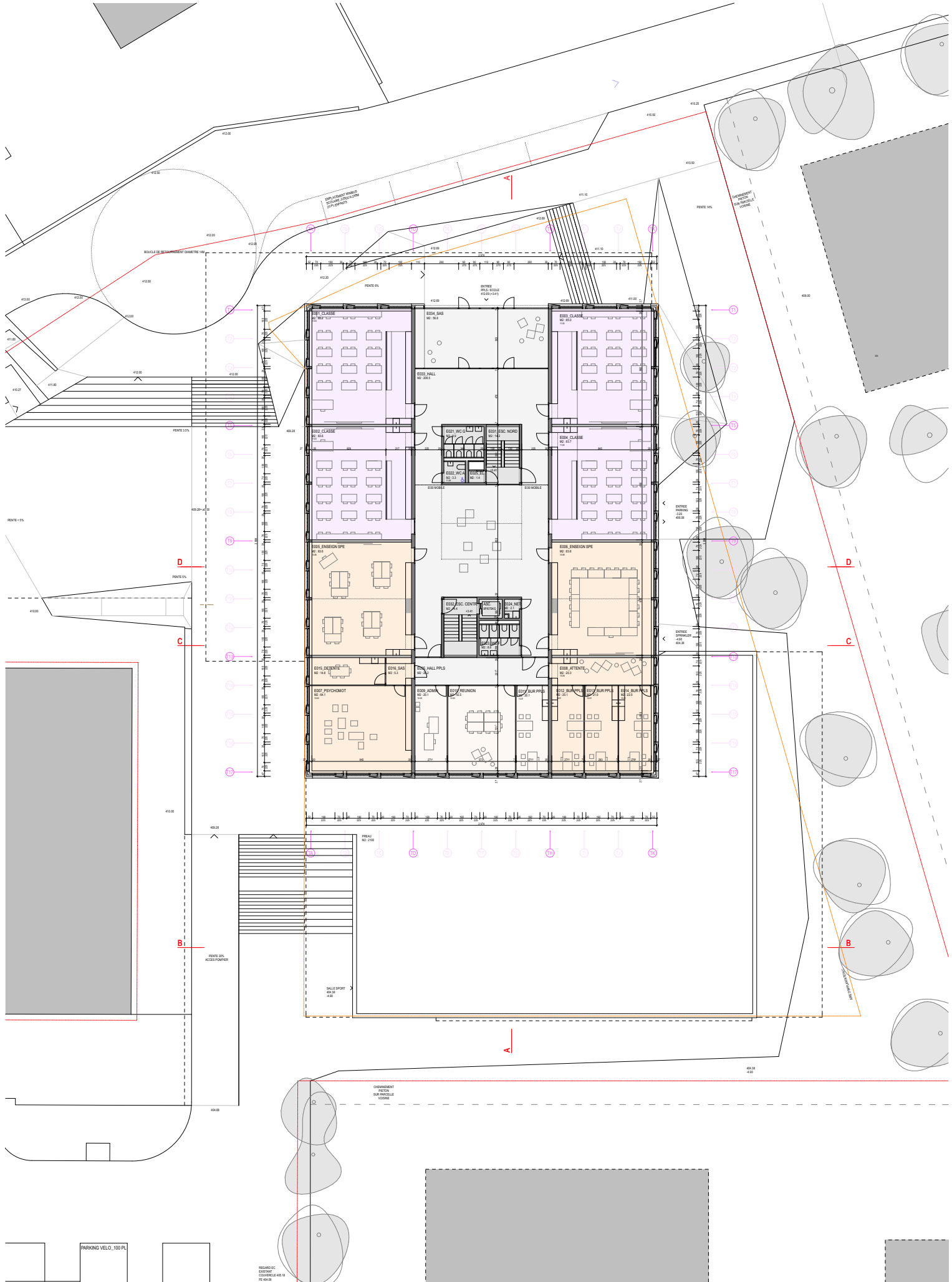












DETAIL / NO

**ENQUETE\_N0+ (REZ SUPERIEUR)**

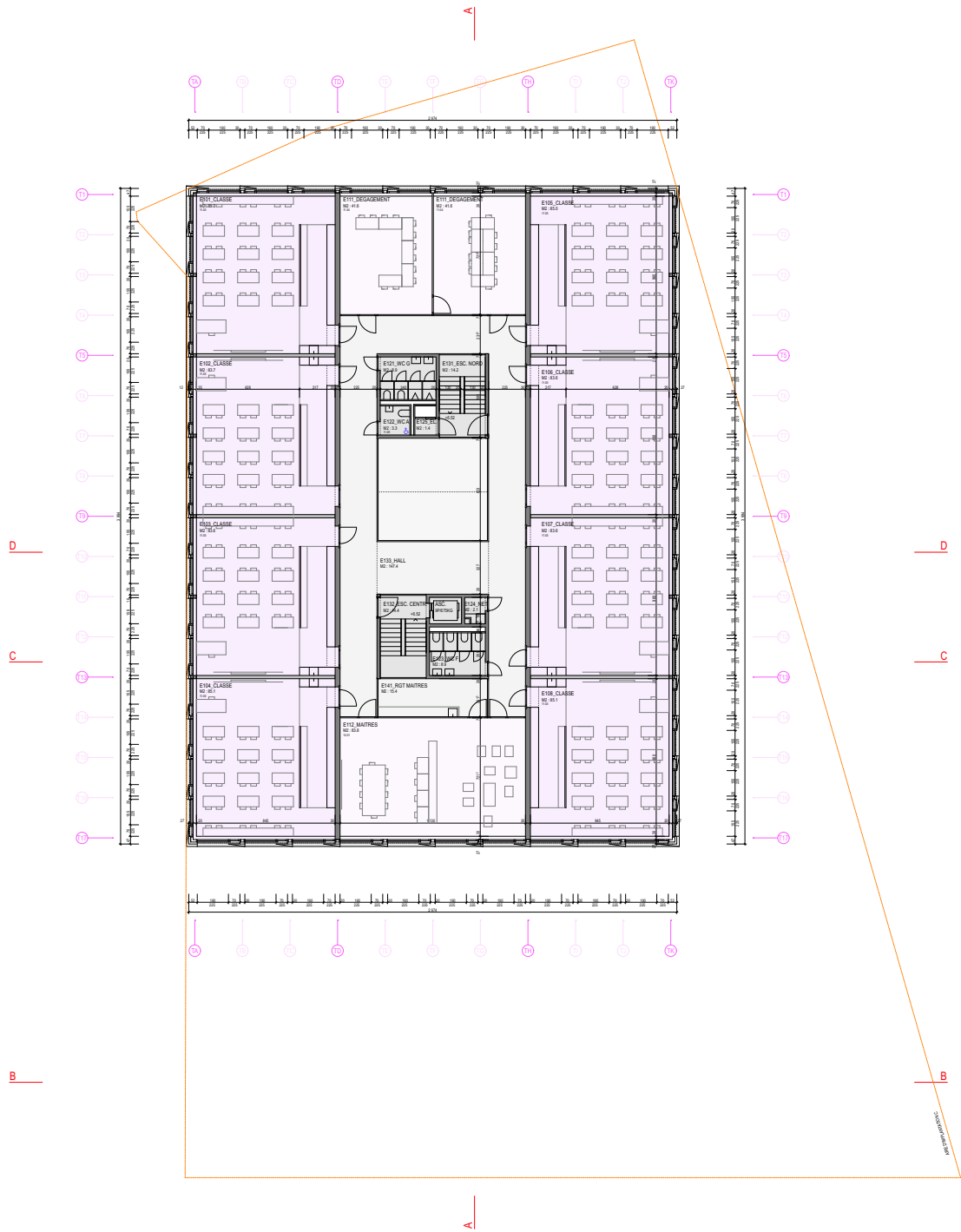


**ECE\_2.400.05**

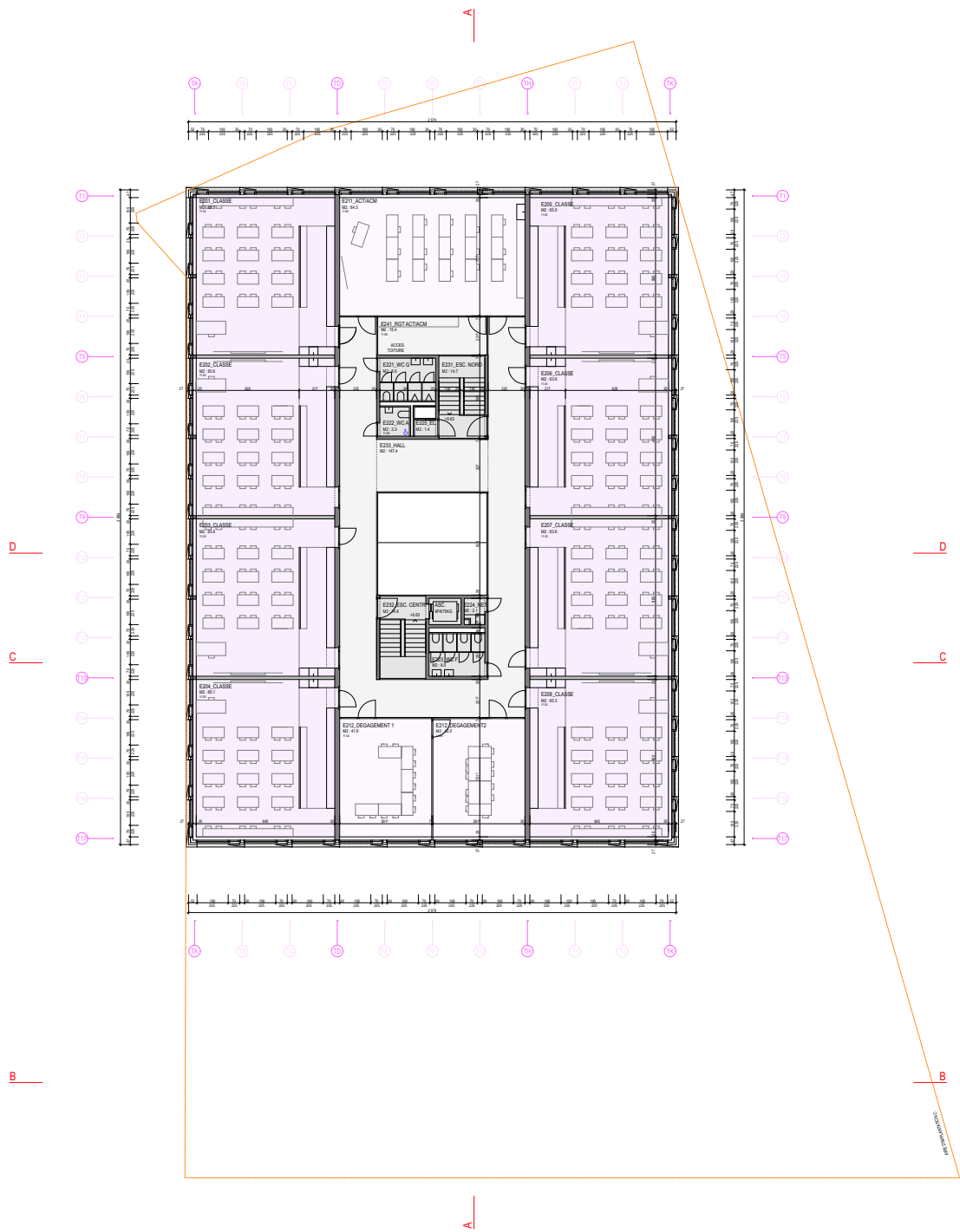
MAITRE DE L'OUVRAGE  
 PROJET  
 ARCHITECTE

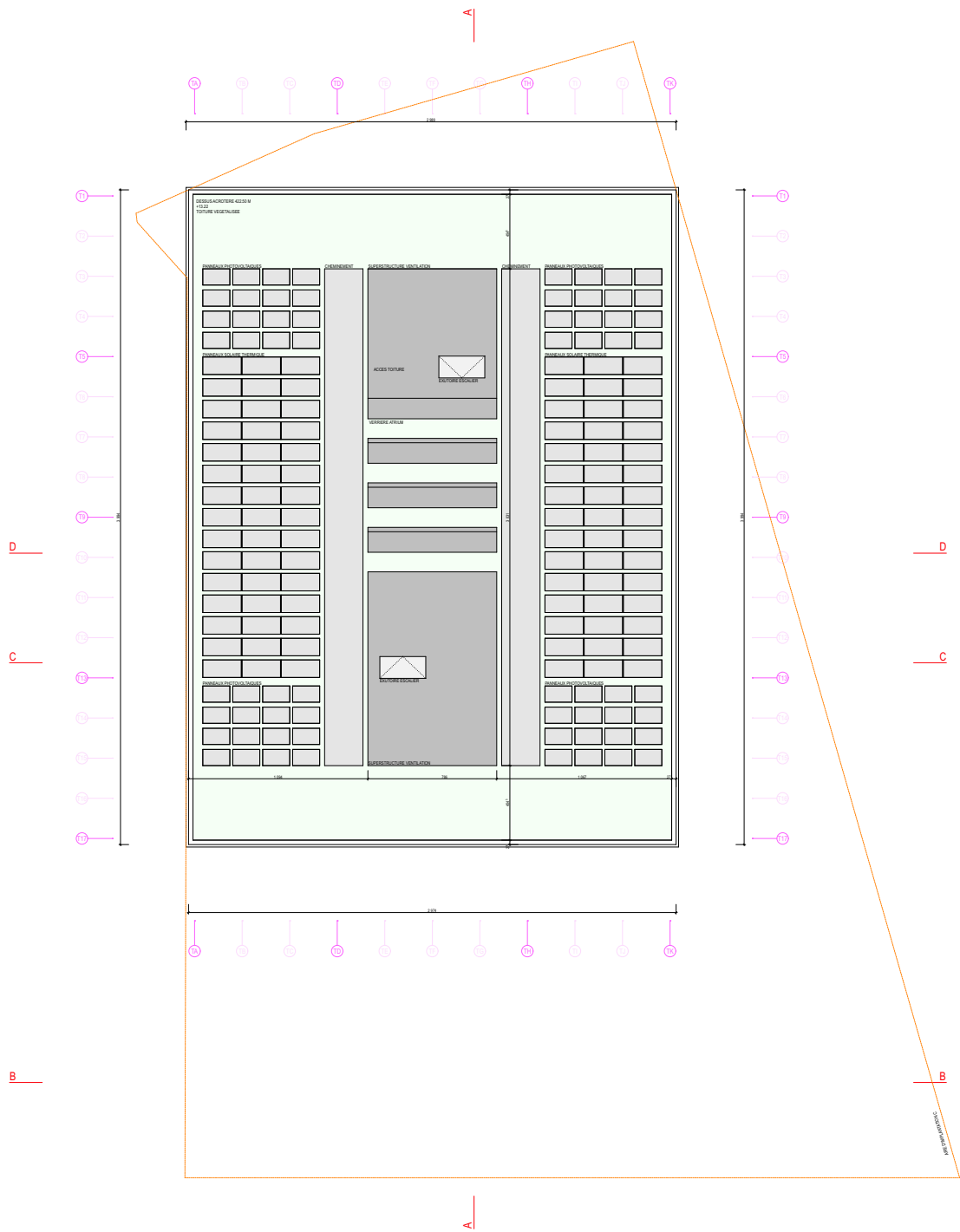
COMMUNE D'ECUBLENS  
 NOUVEAU COLLEGE CROSET-PARC / 1024 ECUBLENS  
 BONNARD / WOEFFRAY ARCHITECTES FAS SIA / MONTHEY / T 024 472 29 70 F 024 472 29 71 / e mail bw@bwarch.ch

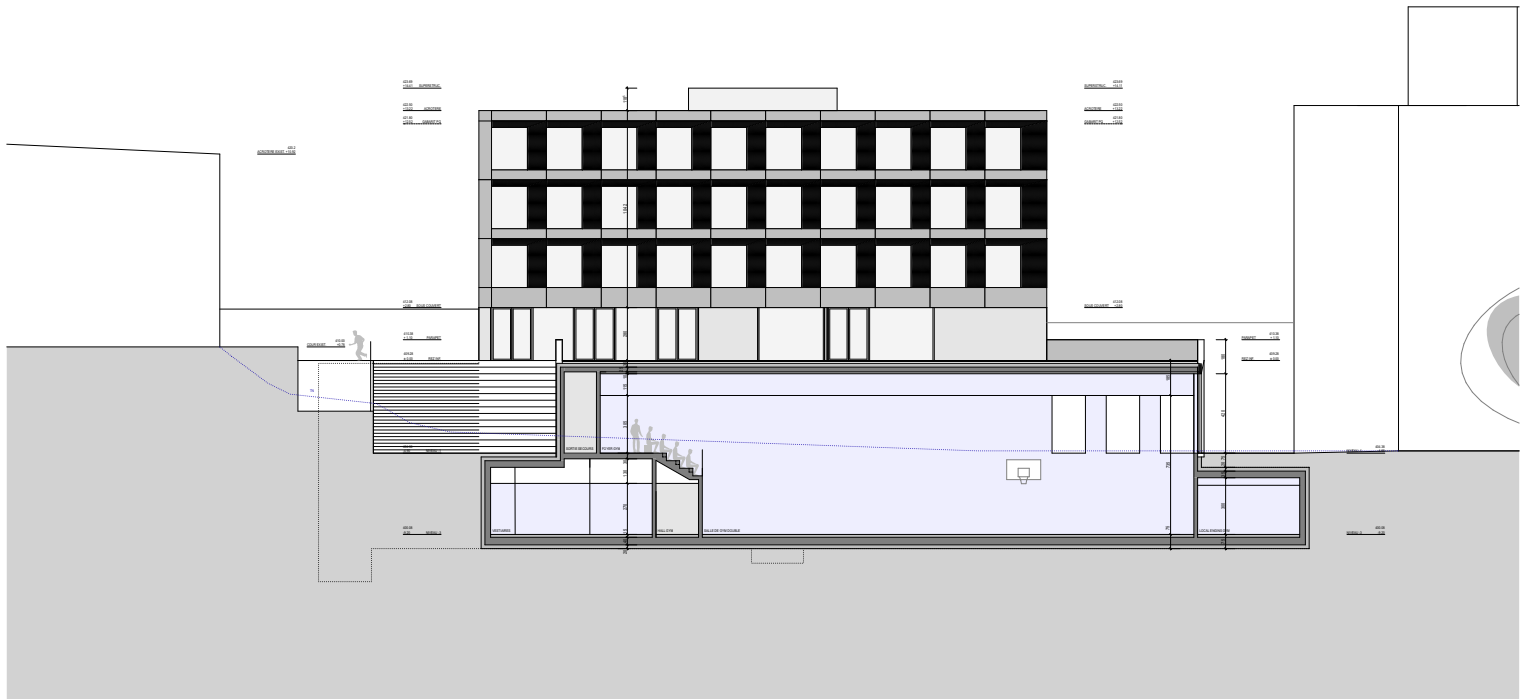
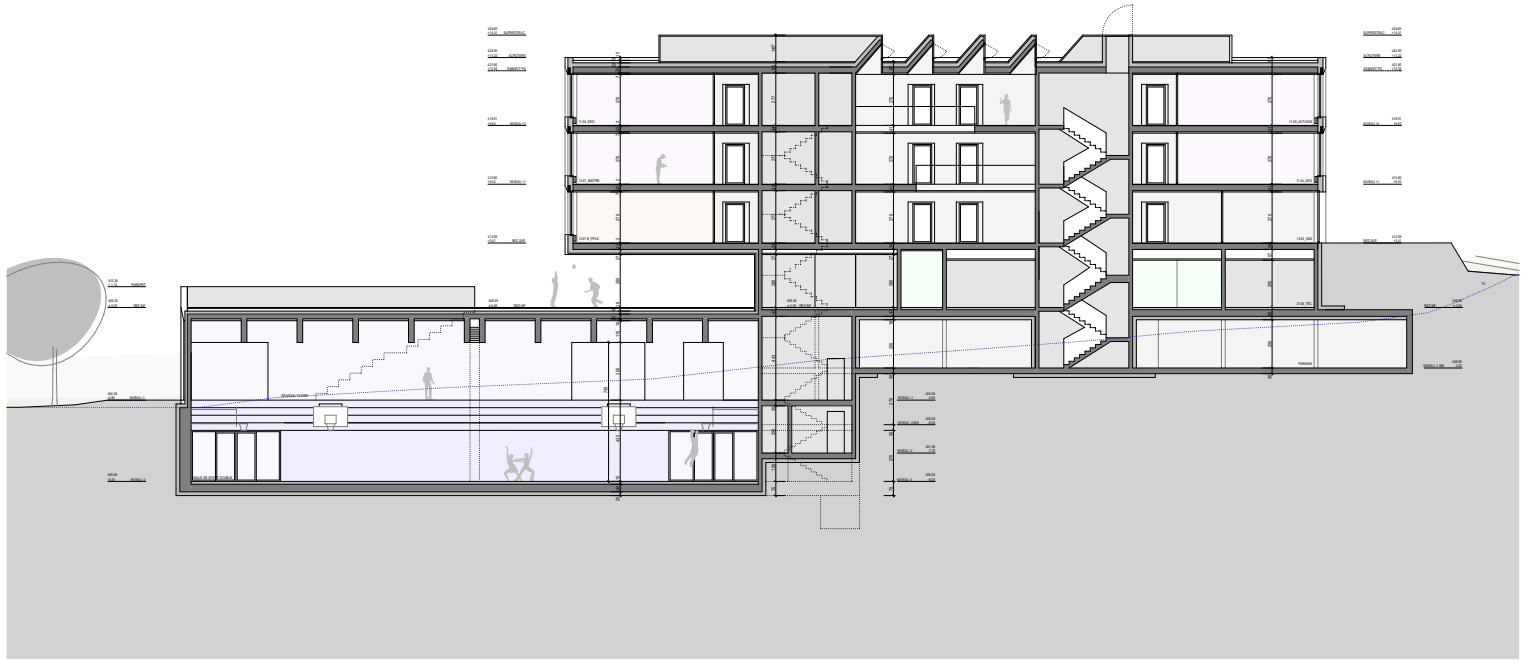
ECHELLE 1:400  
 DATE 16.11.16  
 MODIFIE -



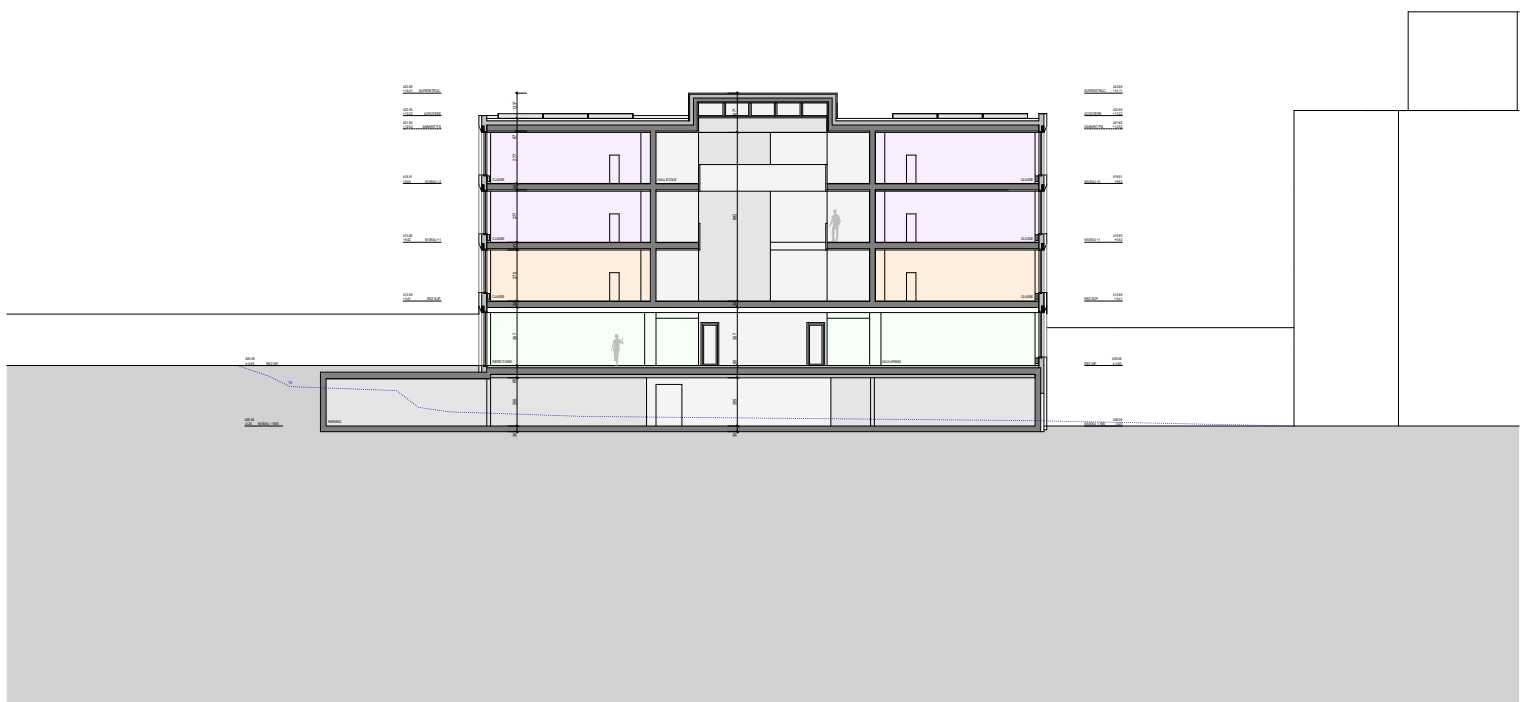


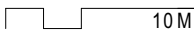



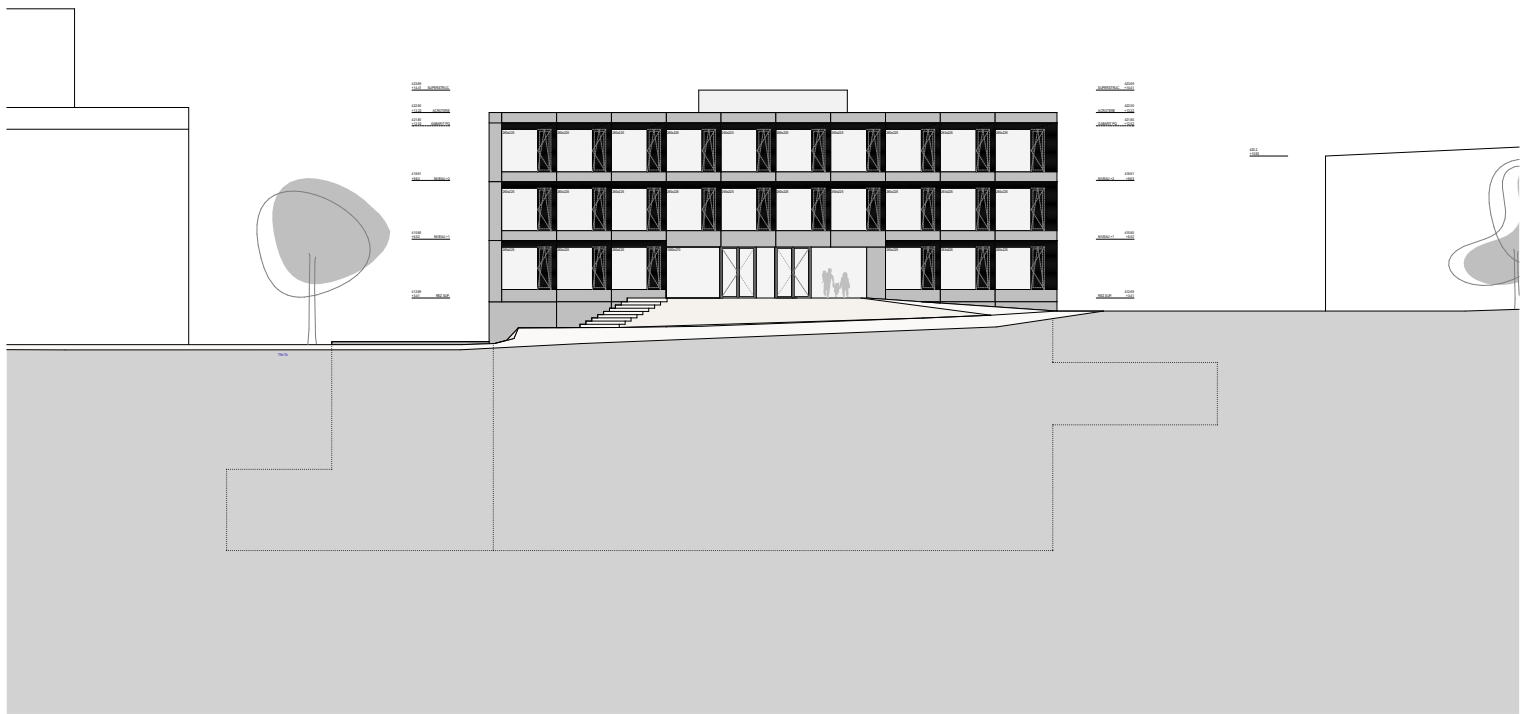




DETAIL / NO	ENQUETE_COUPES AA/BB	10 M	ECE_2.400.09/10
MAITRE DE L'OUVRAGE	COMMUNE D'ECUBLENS		ECHELLE 1:400
PROJET	NOUVEAU COLLEGE CROSET-PARC / 1024 ECUBLENS		DATE 16.11.16
ARCHITECTE	BONNARD / WOEFFRAY ARCHITECTES FAS SIA / MONTHEY / T 024 472 29 70 F 024 472 29 71 / e mail bw@bwarch.ch		MODIFIE -



DETAIL / NO	ENQUETE_COUPES CC/DD	 10 M	 ECE_2.400.11/12
MAITRE DE L'OUVRAGE	COMMUNE D'ECUBLENS		ECHELLE 1:400
PROJET	NOUVEAU COLLEGE CROSET-PARC / 1024 ECUBLENS		DATE 16.11.16
ARCHITECTE	BONNARD / WOEFFRAY ARCHITECTES FAS SIA / MONTHEY / T 024 472 29 70 F 024 472 29 71 / e mail bw@bwarch.ch		MODIFIE -



DETAIL / NO

ENQUETE\_FACADES NORD ET SUD



ECE\_2.400.20/21

MAITRE DE L'OUVRAGE

COMMUNE D'ECUBLENS

ECHELLE

1:400

PROJET

NOUVEAU COLLEGE CROSET-PARC / 1024 ECUBLENS

DATE

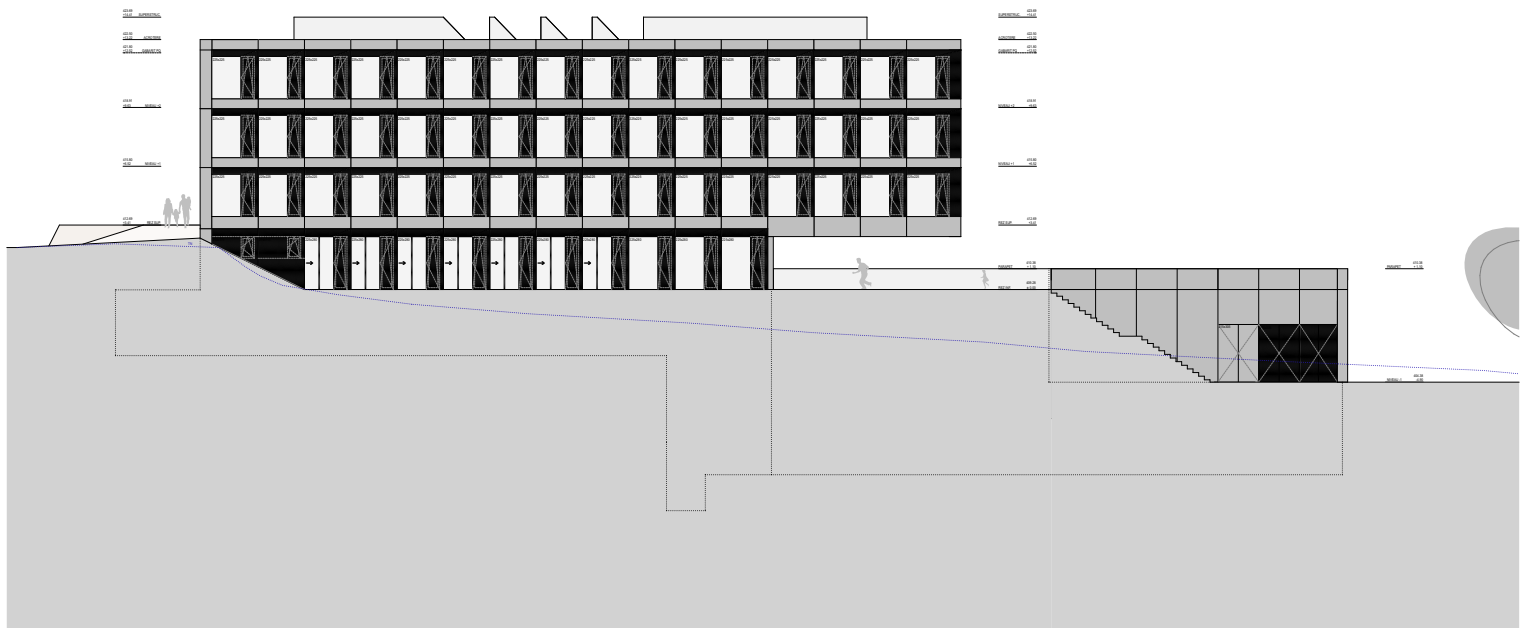
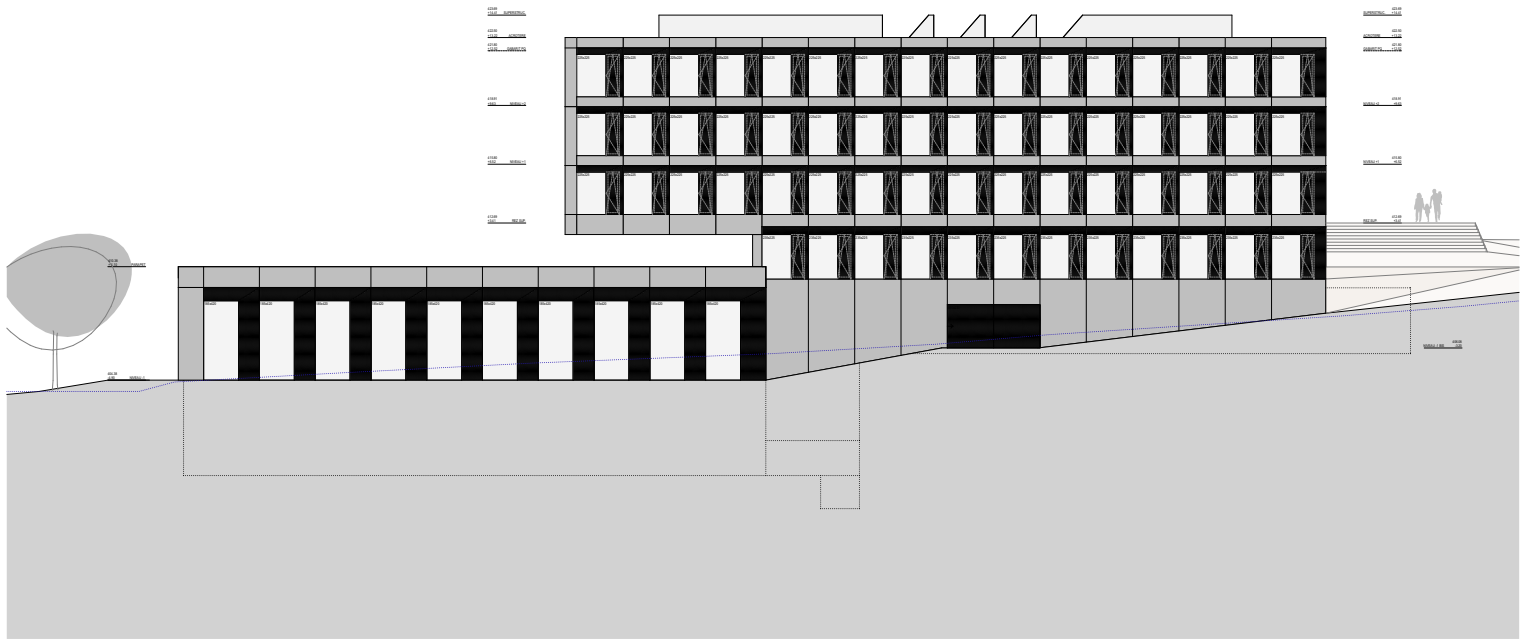
16.11.16

ARCHITECTE

BONNARD / WOEFFRAY ARCHITECTES FAS SIA / MONTHEY / T 024 472 29 70 F 024 472 29 71 / e mail bw@bwarch.ch

MODIFIE

-



DETAIL / NO	ENQUETE_FACADES EST ET OUEST	10 M	ECE_2.400.22/23
MAITRE DE L'OUVRAGE	COMMUNE D'ECUBLENS		ECHELLE 1:400
PROJET	NOUVEAU COLLEGE CROSET-PARC / 1024 ECUBLENS		DATE 16.11.16
ARCHITECTE	BONNARD / WOEFFRAY ARCHITECTES FAS SIA / MONTHEY / T 024 472 29 70 F 024 472 29 71 / e mail bw@bwarch.ch		MODIFIE -